



Metropolitan United Church Stained Glass Windows Tour

The stained glass of yesteryear hearkens back to the time of medieval Europe. The age of Cathedrals spoke to landscape of thought where science, religion, art and philosophy were closely interwoven. The windows were a point of entry for the weary traveler to come and rest awhile and bask in the moment of illuminating light.

The stained glass windows are the threshold and the thin places between heaven and earth that bids the word of welcome to the pilgrim on the way. Come to drink with

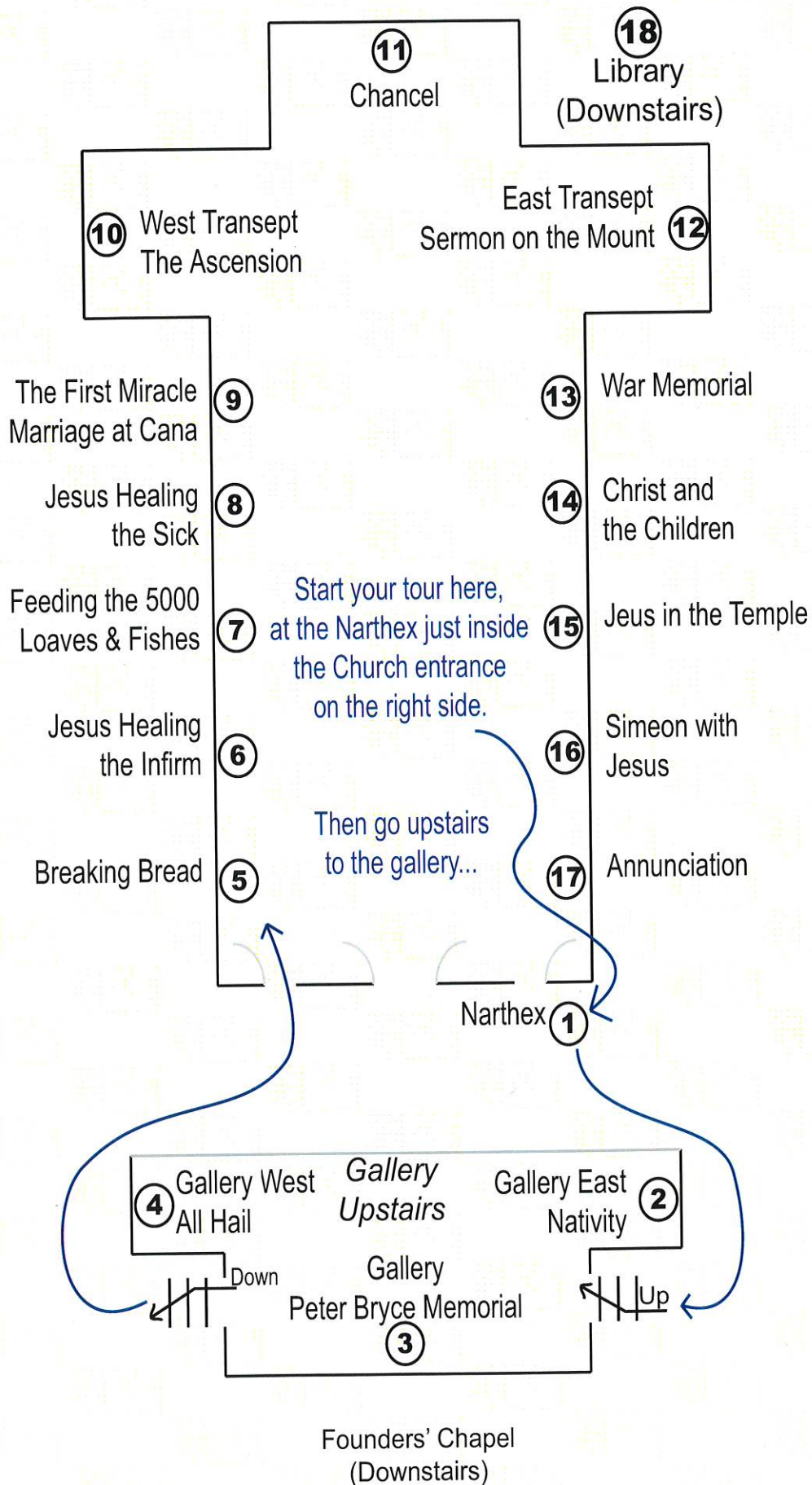


your eyes the windows' tales of another era that speak to a new story in our today.

The scheme of the windows for the Nave, prepared by Robert McCausland, depict on the west wall the "Miracles of Jesus" while the east wall depicts "Scenes from the Life of Christ." You will also notice that many of the windows are dedicated in memory of a family members or friends who have been living milestones in the work and life of Metropolitan United.

“Lift your eyes to the hills from whence does come my aid. My help does come from the Lord whom heaven and earth hath made.”

Tour Map



1 - Narthex "By Love serve one another"

As you enter the church on your right is the Narthex Window.

It is a ground level window which depicts Jesus' words "By Love, serve one another"



Matthew 11:28

"Come Unto me all ye that labor and are heavy laden and I will give you rest."

Psalms 119:105

"I will be a light unto thy path"

Dedicated in memory of Ettie Sherry 1862 – 1965 and her sister Louise Stegman, erected by Emma Sherry Searle

2 - Gallery East Nativity

Climb the stairs to the balcony for a view of the Nativity Window.



Here is depicted the birth of Christ, honouring the visit of the Magi, bringing gifts to the infant Jesus. The centre panel shows Jesus with Mary and Joseph, with the Magi presenting their gifts from the two side panels.

Matthew 2:11

"They presented him with Gold, Frankincense and Myrrh"

Dedicated in memory of Albert William Austin, March 27, 1857 - July 5, 1934.

3 - Gallery South Peter Bryce Memorial Window Conversion of Paul

The pilgrim is then invited to turn around to view the Peter Bryce Memorial Window.



There is depicted the Conversion of Paul on the Road to Damascus, the beginning of the Christian world mission.



Flanking this scene are two acts of charity: on the left, "Naked and ye clothed me", and on the right, "Hungered and ye gave me meat."



The lower central three panels portray a scene from Paul's sermon to the Athenians from Mars Hill. To the left of these panels we see Moses the Lawgiver, and to the right, Isaiah, the greatest of the prophets.

4 - Gallery West All Hail



The window on the west wall window displays the garden scene where the risen Christ meets the three Marys and greets them saying "All Hail".



Dedicated in memory of Marion Wilson, a beloved mother and wife, 1965.

5 - Breaking Bread

Descend the west balcony stairs and enter the Nave through the west aisle door.



6 - Jesus Healing the Infirm

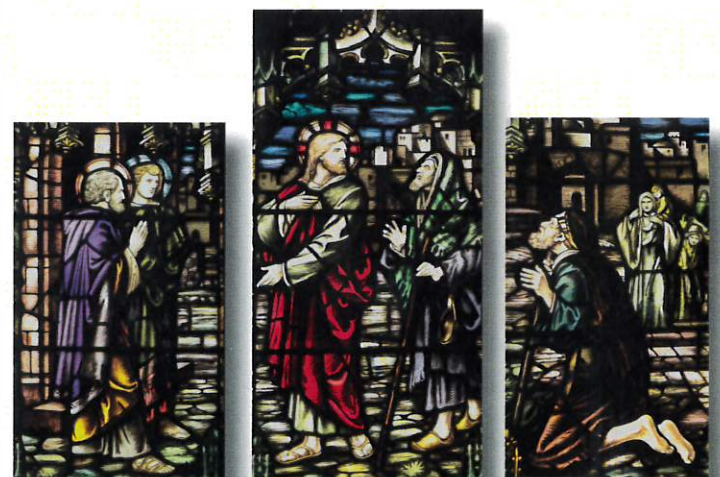


The second west wall window shows Jesus Healing the Infirm.



The first of the five west-wall windows depicts Jesus Breaking Bread following the walk to Emmaus, after the resurrection.

Dedicated in memory of J. Branston-Willmott, June 15, 1839 - June 14, 1918.



The smaller panels below portray "Two Blind Men Ask for Jesus' Help."

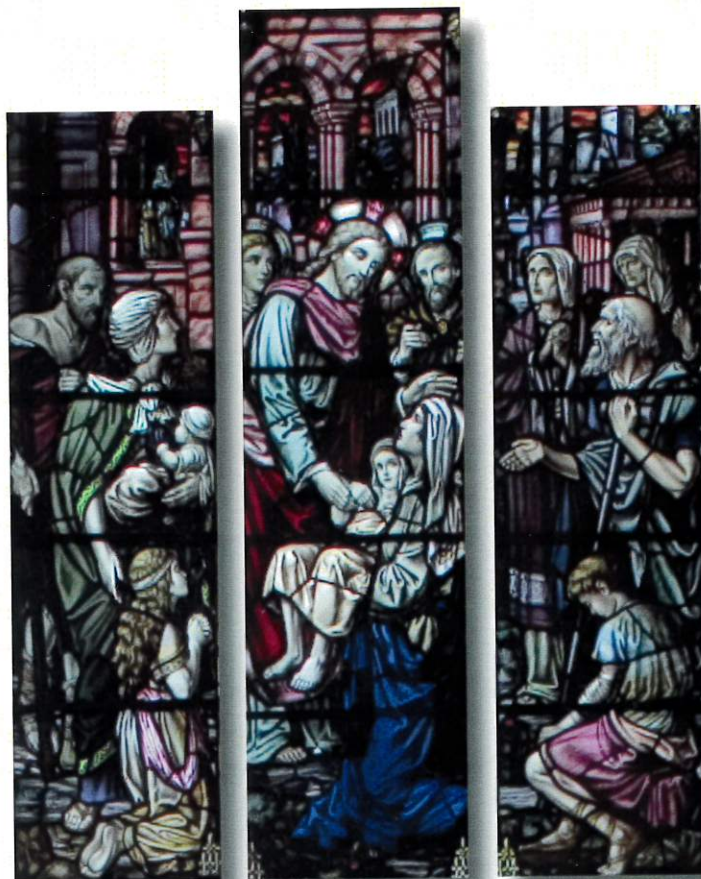
Dedicated in memory of Margaret Phelps Massey, 1858 - 1921.

7 - Feeding the Five Thousand Loaves and Fishes



The third west-wall window depicts the Miracle of the Loaves and Fishes, with the Call to Simon and Andrew “to leave their nets” in the lower panels. Also shown are Peter, James and John.

8 - Jesus Healing the Sick



The fourth west-wall window depicts the Healing of the Sick, with the Parable of the Good Samaritan shown below.

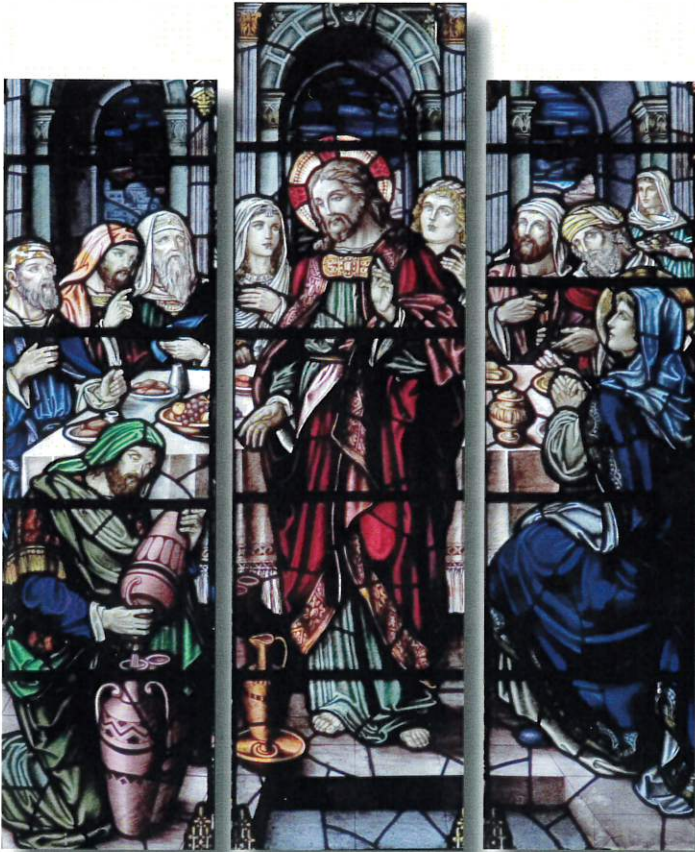


In memory of Alfred Russell Clarke, October 7, 1859 to June 20, 1915



In memory of James Bellingham Boustead, 1832 to 1902 and Isabella Jane Griffith 1837 to 1912

9 - The First Miracle Marriage at Cana



The fifth window depicts the Marriage in Cana. Below you see Jesus with Mary and Martha.



10 - West Transept The Ascension



The West Transept Window shows the Ascension above and the Empty Tomb below.

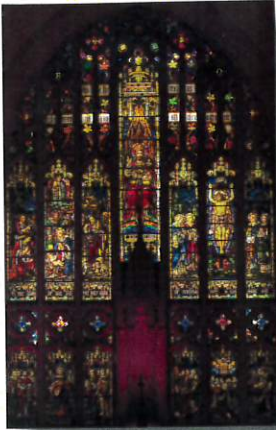


In the lower left is Jesus appearing to Mary Magdalene. In the lower centre Easter Morning when the women came to annoint the body of Jesus and found the sepulchre open. An angel said to them, "He is risen, He is not here." In the lower right the Journey to Emmaus with two disciples.

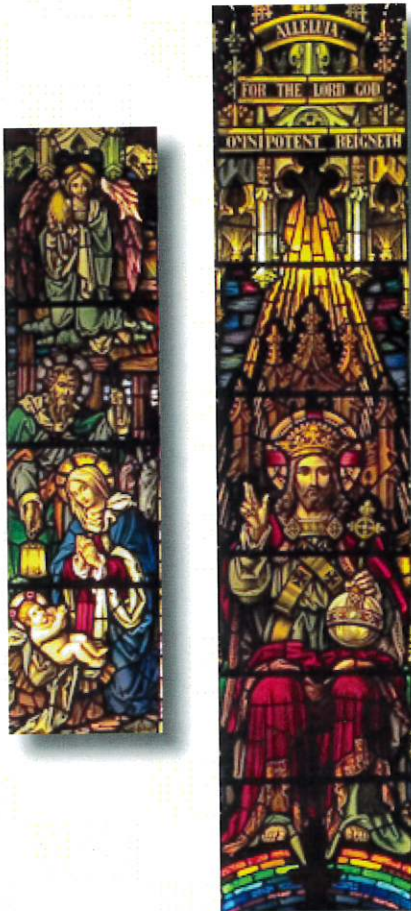
Dedicated in memory of William T. Mason,
January 5 1824 to November 6 1882

Dedicated in memory of Eliza Phelps Massey.

11 - North - Chancel Jesus as the Sovereign Christ



Now walk to the foot of the chancel steps and gaze at the great chancel window that depicts Jesus as the Sovereign Christ to whom God has given dominion over all things. Jesus here is both the healer shown in the west windows and the teacher whom you are about to meet in the east windows. He is seated on the orb of the world with the crown and sceptre.



To the left of the Sovereign Christ is the Nativity; to the right, is the Saviour Crucified.

An integral part of this window is the stone niche beneath the figure of the Sovereign Christ. It symbolizes the presence of the Holy Spirit brooding over the worship and work of the Church.

12 - East Transept Sermon on the Mount



Continuing to the east transept window which shows the Sermon on the Mount.



The smaller panels below depict the Great Commission to the Disciples when they were sent forth. The upper tracery contains the Helmet of Salvation, Shield of Faith, Anchor of Hope, Crown of Glory, Font of Baptism and the Chalice.

Dedicated in memory of Edward Gurney, died 1960.
Restored in recognition of Frank Bisbin.

13 - David's Oblation 1914 - 1918 War Memorial



Continue down the east aisle to view the 1914-18 War Memorial Window and David's Oblation "Is not this the blood of the men that went in jeopardy of their lives?" The upper light is David and his mighty men.



To the lower left is the Royal Coat of Arms; in the lower centre Angel and Youth in Armour (the Crown of life); and in the lower right the Dominion Coat of Arms. In the upper tracery the Angels of Praise and the Centre Ornament, the Cross of Faith.

14 - Christ and the Children



The second window on the east aisle, Christ and the Children. Here is portrayed Jesus surrounded by children, with one child in his arms, and blessing them saying, "Suffer little children to come unto Me and forbid them not; for such is the Kingdom of God."

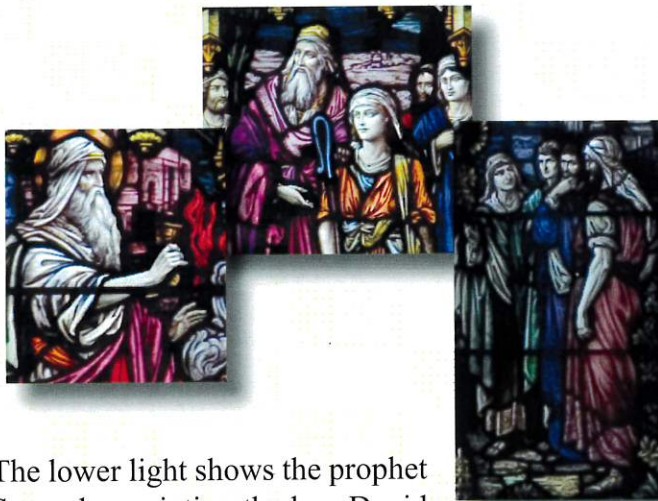


Below in the smaller panels is the Good Shepherd and the side panels show sheep in various positions.

15 - Jesus in the Temple



The third window on the east aisle shows the boy Jesus in the Temple. Here he is seen at the age of twelve questioning the doctors in the Temple.



The lower light shows the prophet Samuel anointing the boy David to be king of Israel following Saul.

The picture shows Samuel in the right panel; David and his father Jesse in the centre panel and more of the sons of Jesse in the left panel.

Dedicated in memory of Lillian Massey Treble.

16 - Simeon with Jesus



The fourth window depicts Simeon with Jesus. In the upper light we see the infant Jesus presented in the Temple held by the holy man Simeon, who said, "Lord, now lettest thy servant depart in peace according to thy word."



The lower panel shows Jesus working in the carpentry shop. In the centre panel He has a cross on His shoulders and a saw in the centre of the work bench. The left panel shows His mother, Mary, spinning wool, and two birds on a dish behind her; to the right are some benches, a burning light and Joseph is planing a board.

In memory of Charles Edward Treble October 20, 1919, and Violet Marion Paterson May 8 1923

17 - The Annunciation



The fifth window depicts the Annunciation. Here is the Angel Gabriel announcing the birth of Jesus to the shepherds. The angel in the centre panel has light rays extending out from it and the two side panels show the astonished shepherds and sheep.

As you bring your time of reflection to a close. You are invited to take time for quiet contemplation in the Founders' Chapel, which is downstairs.



This window was originally placed in the Chapel of the Manse. The scene depicts the Nativity of Christ with Mary, Joseph, the three maji, the three shepherds with Ox and Ass nearby. The design is inspired by 13th - 14th century styles of Old English Church windows. The artist is Gerald tooke.

Dedicated in memory of the Rev. and Mrs. T.E. Bartley.

If you would like to talk with a minister please contact:

the Rev. Jason Meyers
416-363-0331 ext 224
jasonm@metunited.ca

photos & layout by

glenn bell

PHOTOGRAPHY

edgewater@sympatico.ca

416-204-1155

published by



quotemyjob@dibo.ca

Tel: 905-629-2780

Fax: 905-629-2889